

2016



Turnstiles *entry*<sup>TM</sup>

## TS1000 SERIES

**TS1000**



Tripod Turnstile for integration

**TS1000**

[View Details](#)

**TS1000-S**

[View Details](#)

**TS1011**



Tripod Turnstile with Controller and RFID Reader

**TS1011**

[View Details](#)

**TS1011-S**

[View Details](#)

**TS1022**



Tripod Turnstile with Controller and Fingerprint & RFID Reader

**TS1022**

[View Details](#)

**TS1022-S**

[View Details](#)

## TS1200 SERIES

**TS1200**



Double Tripod Turnstile for integration

[View Details](#)

**TS1211**



Double Tripod Turnstile with Controller and RFID Reader

[View Details](#)

**TS1222**



Double Tripod Turnstile with Controller and Fingerprint & RFID Reader

[View Details](#)

**TS2000 SERIES**

**TS2000**



Tripod Turnstile for integration

- TS2000** [View Details](#)
- TS2000-S** [View Details](#)

**TS2011**



Tripod Turnstile with Controller and RFID Reader

- TS2011** [View Details](#)
- TS2011-S** [View Details](#)

**TS2022**



Tripod Turnstile with Controller and Fingerprint & RFID Reader

- TS2022** [View Details](#)
- TS2022-S** [View Details](#)

**TS2100 SERIES**

**TS2100**



Tripod Turnstile for integration

- TS2100** [View Details](#)
- TS2100-S** [View Details](#)

**TS2111**



Tripod Turnstile with Controller and RFID Reader

- TS2111** [View Details](#)
- TS2111-S** [View Details](#)

**TS2122**



Tripod Turnstile with Controller and Fingerprint & RFID Reader

- TS2122** [View Details](#)
- TS2122-S** [View Details](#)

**TS2200 SERIES**

**TS2200**



Double Tripod Turnstile for integration

[View Details](#)

**TS2211**



Double Tripod Turnstile with Controller and RFID Reader

[View Details](#)

**TS2222**



Double Tripod Turnstile with Controller and Fingerprint & RFID Reader

[View Details](#)

**FACE SERIES**

**TS2033**



Tripod Turnstile with face module for integration  
(Does not include facial terminal)

**TS2033** [View Details](#)

**TS2033-S** [View Details](#)

**TS2133**



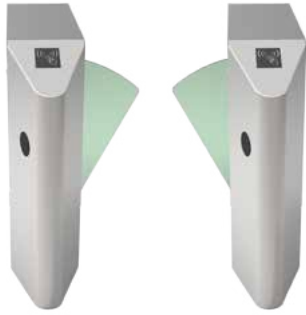
Tripod Turnstile with face module for integration  
(Does not include facial terminal)

**TS2133** [View Details](#)

**TS2133-S** [View Details](#)

## FB1000 SERIES

**FB1000**



Single-lane flap barrier for integration

(2 units)

[View Details](#)

**FB1011**



Single-lane flap barrier with Controller and RFID Reader

(2 units)

[View Details](#)

**FB1022**



Single-lane flap barrier with Controller and Fingerprint & RFID Reader

(2 units)

[View Details](#)

## FB1200 SERIES

**FB1200**



Double-wing flap barrier for integration

[View Details](#)

**FB1211**



Double-wing flap barrier with Controller and RFID reader

[View Details](#)

**FB1222**



Double-wing flap barrier with Controller and Fingerprint & RFID Reader

[View Details](#)

## FB3000 SERIES

**FB3000**



Single-lane flap barrier for integration

(2 units)

[View Details](#)

**FB3011**



Single-lane flap barrier with Controller and RFID Reader

(2 units)

[View Details](#)

**FB3022**



Single-lane flap barrier with Controller and Fingerprint & RFID Reader

(2 units)

[View Details](#)

## FB3200 SERIES

**FB3200**



Double-wing flap barrier for integration

[View Details](#)

**FB3211**



Double-wing flap barrier with Controller and RFID reader

[View Details](#)

**FB3222**



Double-wing flap barrier with Controller and Fingerprint & RFID Reader

[View Details](#)

## FHT1000 SERIES

Available in June 2016



### FHT1000

Full Height Turnstile for integration

[View Details](#)

### FHT1011

Full Height Turnstile with Controller and RFID Reader

[View Details](#)

### FHT1022

Full Height Turnstile with Controller and Fingerprint & RFID Reader

[View Details](#)

## SBT1000S SERIES

Available in May 2016

SBT1000S

SBT1011S

SBT1022S



Swing barrier for integration

[View Details](#)



Swing barrier with Controller and RFID reader

[View Details](#)



Swing barrier with Controller and fingerprint & RFID reader

[View Details](#)

## SBT2000 SERIES

Available in  
May 2016

**SBT2000**



Single-lane swing barrier for integration

(2 units)

[View Details](#)

**SBT2011**



Single-lane swing barrier with Controller and RFID Reader

(2 units)

[View Details](#)

**SBT2022**



Single-lane swing barrier with Controller and Fingerprint & RFID Reader

(2 units)

[View Details](#)

## SBT2200 SERIES

Available in  
May 2016

**SBT2200**



Double-lane swing barrier for integration

[View Details](#)

**SBT2211**



Double-lane swing barrier with Controller and RFID reader

[View Details](#)

**SBT2222**



Double-lane swing barrier with Controller and Fingerprint & RFID Reader

[View Details](#)



## SBT3000 SERIES

Available in  
May 2016

**SBT3000**



Single-lane swing barrier for integration

(2 units)

[View Details](#)

**SBT3011**



Single-lane swing barrier with Controller and RFID Reader

(2 units)

[View Details](#)

**SBT3022**



Single-lane swing barrier with Controller and Fingerprint & RFID Reader

(2 units)

[View Details](#)

## SBT3200 SERIES

Available in  
May 2016

**SBT3200**



Double-lane swing barrier for integration

[View Details](#)

**SBT3211**



Double-lane swing barrier with Controller and RFID reader

[View Details](#)

**SBT3222**



Double-lane swing barrier with Controller and Fingerprint & RFID Reader

[View Details](#)

## STAND COLUMNS



**TSA31**  
Stand column for  
Multibio700

Multibio700 not included



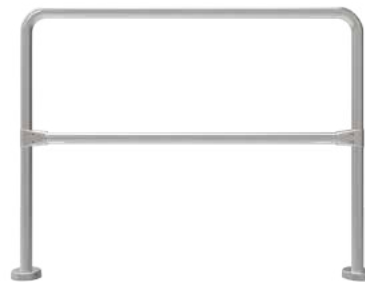
**TSA32**  
Stand column for  
FR1200

FR1200 not included

## HANDRAIL



**R10**  
Narrow handrail



**R20**  
Wide handrail



**R40**  
Wide handrail for  
glass

Glass not included



**R30**  
Narrow handrail  
for glass

Glass not included



**R50**  
Stand column  
handrail for glass

Glass not included

## PARKING BARRIERS



Boom gates are used to regulate traffic, manage access control, or impose high security and they are typically found at level (rail) crossings, drawbridges, parking facilities, checkpoints and entrances to restricted areas.

ZKTeco **PB100** boom barrier utilizes reliable electromechanical machinery to guarantee satisfaction in quality and stability. It is suited for applications requiring high volume access and medium levels of security.

## LONG DISTANCE READERS

### UHF Wiegand Reader

The UHF RFID reader is an RFID long-range proximity card reader which can simultaneously read multiple passive UHF tags at ranges up to 12m.

The reader is waterproof and is suitable for use in a wide range of RFID applications, such as transport management, vehicle management, car parking, production process control, and access control.





**TS1000/S**



**TS1011/S**



**TS1022/S**



**TS1200**



**TS1211**



**TS1222**

<b>AC Panel</b>	NO	C3-200	INBIO-260	NO	C3-400	INBIO-460
<b>Reader</b>	NO	2x KR100	2x FR1200	NO	4x KR100	4x FR1200
<b>Verification</b>	-	RFID	FP/RFID	-	RFID	FP/RFID
<b>Rated power</b>	60W	60W	60W	120W	120W	120W
<b>Flow Rate</b>	25- 48 pass/minute	25- 48 pass/minute	25- 48 pass/minute	25- 48 pass/minute	25- 48 pass/minute	25- 48 pass/minute
<b>Working Environment</b>	Indoor/Outdoor	Indoor/Outdoor	Indoor/Outdoor	Indoor/Outdoor	Indoor/Outdoor	Indoor/Outdoor
<b>Casework material</b>	SUS304*	SUS304*	SUS304*	SUS304*	SUS304*	SUS304*
<b>Pictogram indication</b>	YES	YES	YES	YES	YES	YES
<b>Emergency button IN</b>	YES	YES	YES	YES	YES	YES
<b>Dimensions</b>	52x98x28(CM) + arm length 50CM	52x98x28(CM) + arm length 50CM	52x98x28(CM) + arm length 50CM	60x98x33(CM) + arm length 50CM	60x98x33(CM) + arm length 50CM	60x98x33(CM) + arm length 50CM
<b>Net weight</b>	34kg/29kg (S)	34kg/29kg (S)	34kg/29kg (S)	55kg	55kg	55kg



**TS2200**



**TS2211**



**TS2222**

<b>AC Panel</b>	NO	C3-400	INBIO-460
<b>Reader</b>	NO	4x KR100	4x FR1200
<b>Verification</b>	-	RFID	FP/RFID
<b>Rated power</b>	120W	120W	120W
<b>Flow Rate</b>	25- 48 pass/minute	25- 48 pass/minute	25- 48 pass/minute
<b>Working Environment</b>	Indoor/Outdoor	Indoor/Outdoor	Indoor/Outdoor
<b>Casework material</b>	SUS304*	SUS304*	SUS304*
<b>Pictogram indication</b>	YES	YES	YES
<b>Emergency button IN</b>	YES	YES	YES
<b>Dimensions</b>	111x98x32(CM) + arm length 50CM	111x98x32(CM) + arm length 50CM	111x98x32(CM) + arm length 50CM
<b>Net weight</b>	65kg	65kg	65kg



**TS2000/S**

**TS2011/S**

**TS2022/S**

**TS2100/S**

**TS2111/S**

**TS2122/S**

NO	C3-200	INBIO-260	NO	C3-200	INBIO-260	AC Panel
NO	2x KR100	2x FR1200	NO	2x KR100	2x FR1200	Reader
-	RFID	FP/RFID	-	RFID	FP/RFID	Verification
60W	60W	60W	60W	60W	60W	Rated power
25- 48 pass/minute	25- 48 pass/minute	25- 48 pass/minute	25- 48 pass/minute	25- 48 pass/minute	25- 48 pass/minute	Flow Rate
Indoor/Outdoor	Indoor/Outdoor	Indoor/Outdoor	Indoor/Outdoor	Indoor/Outdoor	Indoor/Outdoor	Working Environment
SUS304*	SUS304*	SUS304*	SUS304*	SUS304*	SUS304*	Casework material
YES	YES	YES	YES	YES	YES	Pictogram indication
YES	YES	YES	YES	YES	YES	Emergency button IN
111×98×26(CM) + arm length 50CM	111×98×26(CM) + arm length 50CM	111×98×26(CM) + arm length 50CM	111×98×18(CM) + arm length 50CM	111×98×18(CM) + arm length 50CM	111×98×18(CM) + arm length 50CM	Dimensions
46kg/39kg (S)	46kg/39kg (S)	46kg/39kg (S)	45kg/38.5kg (S)	45kg/38.5kg (S)	45kg/38.5kg (S)	Net weight



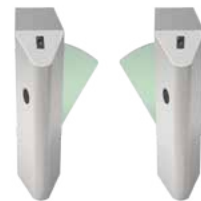
**TS2033/S**



**TS2133/S**

NO	NO
NO	NO
-	-
60W	60W
25- 48 pass/minute	25- 48 pass/minute
Indoor/Outdoor	Indoor/Outdoor
SUS304*	SUS304*
YES	YES
YES	YES
111×133×26(CM) + arm length 50CM	111×133×18(CM) + arm length 50CM
51kg/44kg (S)	51kg/44.5kg (S)

AC Panel
Reader
Verification
Rated power
Flow Rate
Working Environment
Casework material
Pictogram indication
Emergency button IN
Dimensions
Net weight



**FB1000**

**FB1011**

**FB1022**

AC Panel	NO	C3-200	INBIO-260
Reader	NO	2x KR100	2x FR1200
Verification	-	RFID	FP/RFID
Rated power	80W	80W	80W
Flow Rate	25- 30 pass/minute	25- 30 pass/minute	25- 30 pass/minute
Working Environment	Indoor/Outdoor	Indoor/Outdoor	Indoor/Outdoor
Casework material	SUS304*	SUS304*	SUS304*
Pictogram indication	YES	YES	YES
Emergency button IN	YES	YES	YES
Dimensions	140x30x100 (1 unit) (Barrier width 27 , height 78.5) (CM)	140x30x100 (1 unit) (Barrier width 27 , height 78.5) (CM)	140x30x100 (1 unit) (Barrier width 27 , height 78.5) (CM)
Net weight	2 x 71.5kg (2 units 143kg)	2 x 71.5kg (2 units 143kg)	2 x 71.5kg (2 units 143kg)



**FB1200**

**FB1211**

**FB1222**

AC Panel	NO	C3-200	INBIO-260
Reader	NO	2x KR100	2x FR1200
Verification	-	RFID	FP/RFID
Rated power	80W	80W	80W
Flow Rate	25- 30 pass/minute	25- 30 pass/minute	25- 30 pass/minute
Working Environment	Indoor/Outdoor	Indoor/Outdoor	Indoor/Outdoor
Casework material	SUS304	SUS304	SUS304
Pictogram indication	YES	YES	YES
Emergency button IN	YES	YES	YES
Dimensions	140x30x100 (Barrier width 27 , height 78.5) (CM)	140x30x100 (Barrier width 27 , height 78.5) (CM)	140x30x100 (Barrier width 27 , height 78.5) (CM)
Net weight	86kg	86kg	86kg



**FB3000**

**FB3011**

**FB3022**

NO	C3-200	INBIO-260	AC Panel
NO	2x KR100	2x FR1200	Reader
-	RFID	FP/RFID	Verification
110W	110W	110W	Rated power
25- 30 pass/minute	25- 30 pass/minute	25- 30 pass/minute	Flow Rate
Indoor/Outdoor	Indoor/Outdoor	Indoor/Outdoor	Working Environment
SUS304*	SUS304*	SUS304*	Casework material
NO	NO	NO	Pictogram indication
YES	YES	YES	Emergency button IN
120x30x100 (1 unit) (Barrier width 27, height 78.5) (CM)	120x30x100 (1 unit) (Barrier width 27, height 78.5) (CM)	120x30x100 (1 unit) (Barrier width 27, height 78.5) (CM)	Dimensions
2 x 67.5kg (2 units 135kg)	2 x 67.5kg (2 units 135kg)	2 x 67.5kg (2 units 135kg)	Net weight



**FB3200**

**FB3211**

**FB3222**

NO	C3-200	INBIO-260	AC Panel
NO	2x KR100	2x FR1200	Reader
-	RFID	FP/RFID	Verification
110W	110W	110W	Rated power
25- 30 pass/minute	25- 30 pass/minute	25- 30 pass/minute	Flow Rate
Indoor/Outdoor	Indoor/Outdoor	Indoor/Outdoor	Working Environment
SUS304	SUS304	SUS304	Casework material
NO	NO	NO	Pictogram indication
YES	YES	YES	Emergency button IN
120x30x100 (Barrier width 27, height 78.5) (CM)	120x30x100 (Barrier width 27, height 78.5) (CM)	120x30x100 (Barrier width 27, height 78.5) (CM)	Dimensions
86kg	86kg	86kg	Net weight



**SBT2000**

**SBT2011**

**SBT2022**

**SBT2200**

**SBT2211**

**SBT2222**

AC Panel	NO	C3-200	INBIO-260	NO	C3-200	INBIO-260
Reader	NO	2x KR100	2x FR1200	NO	2x KR100	2x FR1200
Verification	-	RFID	FP/RFID	-	RFID	FP/RFID
Rated power	-	-	-	-	-	-
Flow Rate	Max 30/minute	Max 30/minute	Max 30/minute	Max 30/minute	Max 30/minute	Max 30/minute
Working Environment	Indoor/Outdoor	Indoor/Outdoor	Indoor/Outdoor	Indoor/Outdoor	Indoor/Outdoor	Indoor/Outdoor
Casework material	SUS304*	SUS304*	SUS304*	SUS304*	SUS304*	SUS304*
Pictogram indication	YES	YES	YES	YES	YES	YES
Emergency button IN	YES	YES	YES	YES	YES	YES
Dimensions	120×100×18(CM) + barrier width 27CM	120×100×18(CM) + barrier width 27CM	120×100×18(CM) + barrier width 27CM	120×100×18(CM) + barrier width 27CM	120×100×18(CM) + barrier width 27CM	120×98×33(CM) + barrier width 27CM
Net weight	-	-	-	-	-	-



**SBT3000**

**SBT3011**

**SBT3022**

**SBT3200**

**SBT3211**

**SBT3222**

AC Panel	NO	C3-200	INBIO-260	NO	C3-200	INBIO-260
Reader	NO	2x KR100	2x FR1200	NO	2x KR100	2x FR1200
Verification	-	RFID	FP/RFID	-	RFID	FP/RFID
Rated power	-	-	-	-	-	-
Flow Rate	Max 30/minute	Max 30/minute	Max 30/minute	Max 30/minute	Max 30/minute	Max 30/minute
Working Environment	Indoor/Outdoor	Indoor/Outdoor	Indoor/Outdoor	Indoor/Outdoor	Indoor/Outdoor	Indoor/Outdoor
Casework material	SUS304*	SUS304*	SUS304*	SUS304*	SUS304*	SUS304*
Pictogram indication	YES	YES	YES	YES	YES	YES
Emergency button IN	YES	YES	YES	YES	YES	YES
Dimensions	160×100×18(CM) + barrier width 28CM	160×100×18(CM) + barrier width 28CM	160×100×18(CM) + barrier width 28CM	160×100×18(CM) + barrier width 28CM	160×100×18(CM) + barrier width 28CM	160×100×18(CM) + barrier width 28CM
Net weight	-	-	-	-	-	-





**SBT1000S**

**SBT1011S**

**SBT1022S**

NO	C3-200	INBIO-260	AC Panel
NO	2x KR100	2x FR1200	Reader
-	RFID	FP/RFID	Verification
20W	20W	20W	Rated power
Max 20/minute	Max 20/minute	Max 20/minute	Flow Rate
Indoor/Outdoor	Indoor/Outdoor	Indoor/Outdoor	Working Environment
SUS304*	SUS304*	SUS304*	Casework material
NO	NO	NO	Pictogram indication
YES	YES	YES	Emergency button IN
18x16x100 (Barrier width 84 , height 18.5) (CM)	18x16x100 (Barrier width 84 , height 18.5) (CM)	18x16x100 (Barrier width 84 , height 18.5) (CM)	Dimensions
-	-	-	Net weight



**FHT1000**

**FHT1011**

**FHT1022**

NO	C3-200	INBIO-260	AC Panel
NO	2x KR100	2x FR1200	Reader
-	RFID	FP/RFID	Verification
50W	50W	50W	Rated power
20- 35 pass/minute	20- 35 pass/minute	20- 35 pass/minute	Flow Rate
Indoor/Outdoor	Indoor/Outdoor	Indoor/Outdoor	Working Environment
SUS304	SUS304	SUS304	Casework material
YES	YES	YES	Pictogram indication
YES	YES	YES	Emergency button IN
160x125x235 CM	160x125x235 CM	160x125x235 CM	Dimensions
-	-	-	Net weight